

"	2019	11						1900				
		10		20								
		...	2019	12			2018	12	21	2020	10	31
										20		
31				2020			20					10
							17	24,115				
				12	13							
13		25										2021
	12						90			2021	2023	
		"										
							12					
			2021	2023								"
	"											

4. 目標値及びパターン

				"		2018	12	26		18,948	16	33	
1991	11				2018	10				24,448			
	...		17	24,116		12	17			24,091			
18	10												
		17											
				"									
			17	24,116						16			
								"	...	16			
21,532±	610												
20,110	20,173									16			
		"					28			20,916			
								"					
		8.33											
		18	12									18	12
33									10			16	
			17				10						
							21,705					"	

6. 今週のストラテジー

	23,400			
	"	24,116	"	
23,275± 50				
20,500		23,150		
			22,160	23,078
22,200± 250				

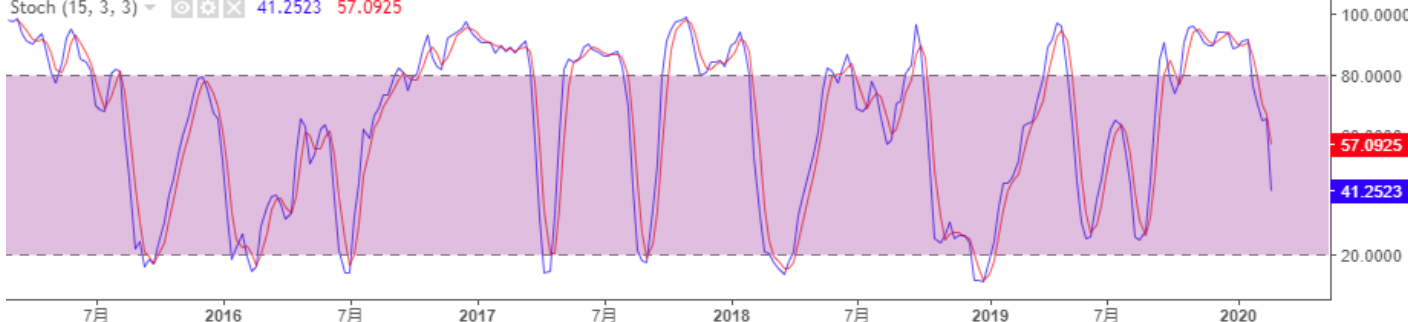
日経平均株価, 日本, 週, 東京 (CFD) 始値22949.37 高値22950.23 安値20916.40 終値21142.96

MA (24, close, 0) 23086.2596

MA (39, close, 0) 22357.8909



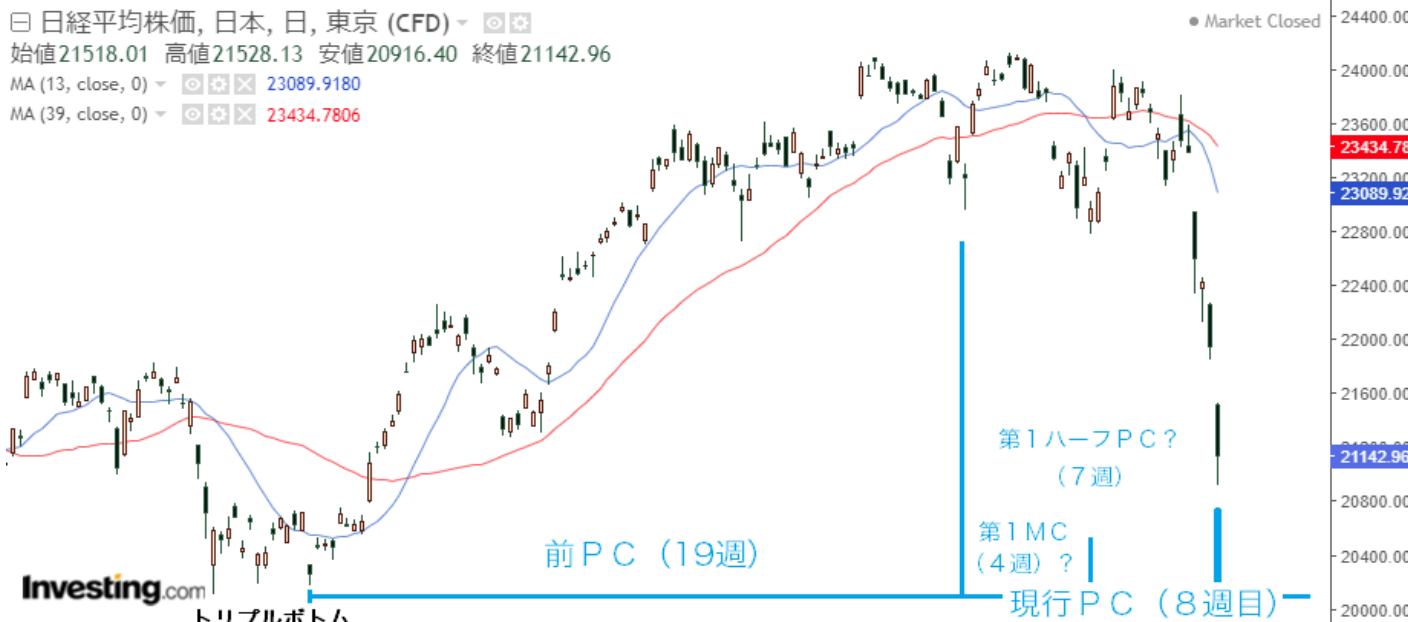
Stoch (15, 3, 3) 41.2523 57.0925



日経平均株価, 日本, 日, 東京 (CFD) 始値21518.01 高値21528.13 安値20916.40 終値21142.96

MA (13, close, 0) 23089.9180

MA (39, close, 0) 23434.7806



Stoch (15, 3, 3) 9.3950 16.4052

